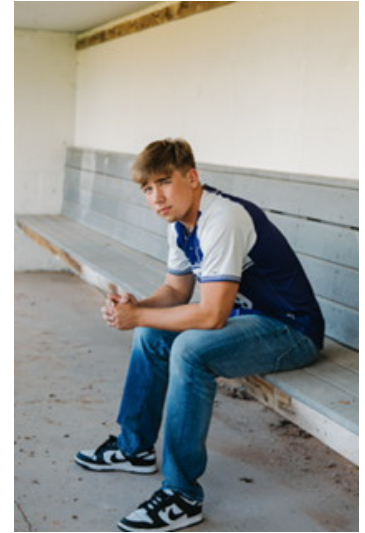


Cross Beams June 2026



2026 English Lutheran High School Graduates: (left to right above) Ethan Ladwig, Abigail Sanders, Joseph Lewis, Wyley Myers. Below is Lorelei Johnson who was not able to join us on the 17th.



We had the pleasure of honoring these graduates at our May 17 church service. Each of them also received a quilt that was lovingly stitched and covered in prayer by our quilting group. Congratulations to each of our graduates. God Bless You!

Children enjoying time learning at church.



What's Inside:

- † Pastor's Article
- † Church & Youth News
- † Financial Update
- † Council Minutes
- † Prayer List
- † Church Calendar
- † Admin. Asst. Needed
- † Volunteer Opportunities
- † Events
- † Miscellaneous

June 2026

Have you ever seen the cartoon of the three guys carrying a pole and walking up to a hole in the ground? They cross the hole and do not fall in because they just hold onto pole and keep walking. The first guy holds onto the pole while his companions, the two in the back support him. Then the next guy in the middle is the one who crosses, and the guy in the middle holds on while the other two support him, and then finally the third guy can cross the hole because he holds onto the stick, and the other two hold him up. The church and faith are kind of like that; we support one another in our faith journeys. We may not always feel that our faith is as strong as it should be; it ebbs and flows, waxing and waning. It's not a straight line, sometimes it goes up, sometimes it goes down, but the thing is, when we have the church, when we have each other, we have that support system, so that when we have those moments of lows, we have the rest of the church around us to hold us up. Sometimes it's not even a matter of us holding onto that stick to that pole, but I don't know how to explain it other than we're tied to it somehow, and it just helps us get through life. We all have struggles. Struggle is a part of life. Things are not always going to be all soda pop and bubblegum. Even when we follow Christ, even when we follow listen to the word of God and follow God to the best of our abilities, there are still going to be valleys and low times in our lives. Thankfully, we have the church, that we have each other to lift us to support us to have that community and I pray to God that English Lutheran Church is that community for you that we can support one another in those tough moments of life, that we love each other and care for each other and hold onto that pole to support one another.

Some of the biggest joys of being a pastor is being there with people during the best moments of their lives. Getting to be at the weddings, baptisms, birthday parties, and graduations; to be there with people through the joys of life. However, one of the greatest privileges of being your pastor is to be with you in those tough, tough moments of life. When you are having struggles, to be that support for you. The deepest moments of Ministry for me have been being with people in those rough moments, in those rough patches. And people feel guilty when they call during those rough times. When they are struggling, when they're having a moment of doubt in their faith, they apologize. You don't need to apologize when you have a crisis of faith. Faith is like those three guys on the pole, we try to support one another. We try to lift up each other to help get us over those holes in our lives, and it's not always big things, but sometimes just the little things, showing up carrying a shoulder to cry on. It is in those moments when we are honest, true, and real. Those are the moments that matter in our lives. I thank God every day for that gift, that gift of faith, that love. So when you have those moments of doubt and faith doubt in your faith, it feels like it's shaky, that's OK. You will get through this.

This summer is going to be a struggle for our church family. We're losing a valuable piece of our team that helps keep our church running. Julie is going to fully retire. I am so grateful for the two years that I got to work with her, because she has been a rock. She has kept me steady. She has been such amazing support, and I am going to miss working with her. And we don't have a replacement yet. God will eventually put someone in our path, but for the moment, we'll hold onto our faith. We will be thankful for the time that Julie spent with us and wish her well in her next steps in her life. Thank you, Julie, for everything you have done. You have been amazing, and I am going to miss you so much. Thank you. God bless bye.

Pastor Pete

CHURCH NEWS

Women's Brunch & Bible Study

Please join us again in the fall. Please watch the church calendar and the newsletter for updates.

Vacation Bible School

Monday, June 15-Thursday, June 18th
12:00 p.m. to 3:30 p.m.

Open to students in the community who have completed 4YK-5th grade. Transportation to Vacation Bible School from Ellsworth Community School District Summer School is provided. VBS is FREE and includes lunch and a snack. Adult and youth volunteers are needed. The program will be led by counselors from Luther Point Bible Camp. Registration:

<https://forms.gle/mRZU5dspfW5RC5ce7>



2026 VBS
Registration QR Code



Cheese Curd Fest June 26-27 Volunteer Sign-Up!

<https://signup.com/go/XRMXooM>

random
Acts of kindness

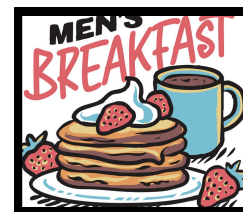
There are baskets located by the front and back doors of the church for donations of nonperishable food items to support the **Pierce County Food Pantry**.

The Food Pantry is in need of the following items:
Flour, Oatmeal, Sugar, Baked Beans, Dry Soup Mix, Ramen Noodles, Cereal, Canned Meats, Vegetable Oil, Dish Soap, Laundry Soap, Paper Towels

To donate money online:
hungerpreventioncouncil.com, click on Give

Thank you for your "kindness".

Men's Breakfasts-Thursdays at 8 a.m. We look forward to seeing you!
The suggested donation is \$5.00 to cover the cost of food.



Volunteer Opportunities

Volunteer opportunities available at English Lutheran Church this summer include:

Vacation Bible School: June 18-21, 12:00 PM - 3:30 PM.

English Lutheran Food Booth at the Pierce County Fair: August 13-16.

During the school year, the following volunteer opportunities are available at English Lutheran Church:

Sunday School: Most Sundays, 9:45-10:15 AM.
Kingdom Kids: The first Wednesday of the month, after school, 3:30-5:00 PM.

Confirmation: Be a guide for 6th-9th graders on Wednesday nights, 6:30-7:30 PM.

Worship Leaders: Volunteer to help with song leading or playing an instrument during Sunday morning worship.

Please talk with Pastor or contact the office to get more information! We have lots of fun when we work together! You make a difference and are appreciated!

Support the Church "Pie Ladies" During Rhubarb Season

Do you have an abundance of rhubarb? If so, your help would be greatly appreciated by the "Pie Ladies" at church. They are preparing for pie making during the Pierce County Fair and could use rhubarb.

If you are able to assist, please clean, cut, and freeze your rhubarb. Place the prepared rhubarb in gallon-size freezer bags so it's ready for use in pie making. Feel free to drop off at church. If you don't have time to prep and freeze the rhubarb yourself, you are welcome to leave your rhubarb at the church. One of the "Pie Ladies" will pick it up and process it for freezing. For pickup arrangements or questions, feel free to contact Cindy Baird at 715-307-2665 or Lynette Winger at 715-821-5853. They will ensure your rhubarb is collected and prepared for the fair. Your support is greatly appreciated!

CHURCH NEWS

Heart-Touching One Life at a Time

Mission Statement: To reach children and families in tough financial situations. We can assist with basic needs by providing clothing, shoes, coats, toys, or other essential items to help alleviate the challenges faced in these difficult situations.

Heart is here to lend a helping hand to families who need support during tough times. We have access to furniture, school supplies, laundry soap, coats, bikes, toys, and an array of other items.

Recipients will be vetted to confirm the needs. There are limits to what we can offer. We can help families at Christmas with gifts for children, and we work with the Gift Box Program as well as Basics for Kids with donations of coats and boots.

We are here to help change lives and improve the quality of life for those who need a helping hand. We are not allowed to help with things like rent, utility bills, etc. If you are in need or know someone else in need, please reach out to Cindy at 715-307-9615 or Donna at 715-307-2213.

FREE Summer FUN SERIES

PROUDLY PRESENTED BY
ELLSWORTH AREA
CHAMBER OF
COMMERCE
AND
ELLSWORTH AREA
ORGANIZATIONS
& BUSINESSES

Thursdays
5:00-7:00pm
East End Park

Thursday June 4th

THE ELVIS SHOW

Bring your lawn chair and enjoy the show.
Food will be provided.

Hosted by Our Savior's Lutheran
& English Lutheran Church

2026 CHURCH SOFTBALL SCHEDULE				
Games start at 4 pm and 7 pm on Sunday 7 pm on Mon/Tues				
Sunday 5/17/26	4:00PM	Big River 2	VS	Big River 1
Sunday 5/17/26	7:00PM	English Lutheran	VS	Our Saviors
Monday 5/18/26	7:00PM	Zion	VS	Bethel
Tuesday 5/19/26	7:00PM	St Francis	VS	C3
Sunday 5/31/26	4:00PM	C3	VS	Big River 2
Sunday 5/31/26	7:00PM	Bethel	VS	St Francis
Monday 6/1/26	7:00PM	Big River 1	VS	English Lutheran
Tuesday 6/2/26	7:00PM	Zion	VS	Our Saviors
Sunday 6/7/26	4:00PM	Zion	VS	English Lutheran
Sunday 6/7/26	7:00PM	Big River 1	VS	St Francis
Monday 6/8/26	7:00PM	Big River 2	VS	Our Saviors
Tuesday 6/9/26	7:00PM	C3	VS	Bethel
Sunday 6/14/26	4:00PM	Our Savior's	VS	C3
Sunday 6/14/26	7:00PM	Zion	VS	Big River 1
Monday 6/15/26	7:00PM	St Francis	VS	Big River 2
Tuesday 6/16/26	7:00PM	English Lutheran	VS	Bethel
Sunday 6/21/26	4:00PM	Bethel	VS	Big River 2
Sunday 6/21/26	7:00PM	Zion	VS	C3
Monday 6/22/26	7:00PM	St Francis	VS	English Lutheran
Tuesday 6/23/26	7:00PM	Our Saviors	VS	Big River 1
Sunday 6/28/26	4:00PM	Bethel	VS	Big River 1
Sunday 6/28/26	7:00PM	English Lutheran	VS	C3
Monday 6/29-26	7:00PM	Our Saviors	VS	St Francis
Tuesday 6/30/26	7:00PM	Zion	VS	Big River 2
Sunday 7/12/26	4:00PM	Our Saviors	VS	Bethel
Sunday 7/12/26	7:00PM	Big River 2	VS	English Lutheran
Monday 7/13/26	7:00PM	Big River 1	VS	C3
Tuesday 7/14/26	7:00PM	Zion	VS	St Francis
make up game			VS	
Tournaments: Saturday July 25th/26th				
Please notify Donna Constant if you cannot make a game. 715-307-0451				



The **Pierce County Fair** in Ellsworth, Wisconsin, will be held from August 13 to August 16, 2026. We need volunteers to assist in our Fair Stand. Please see the sign-up sheets at the church or contact the office to get signed up for a shift or two today. We need you!

English Lutheran Church Council Minutes May 19, 2026

Members Present: Pastor Pete, Mark Groen, Danielle Chollett, Miranda Mewes, Mike Harris

Absent: Cindy Baird, Eric Van Nocker

The meeting was called to order by Mark Groen at 6:30 PM.

The mission statement was read.

Pastor Pete read a devotion.

Tonight's meeting agenda was approved.

April 21st, 2026, council meeting minutes were approved previously via email correspondence.

REPORTS:

Finance / Treasurer's Report - Met budgeted income this past month, with giving up this past month. Appreciate sincerely congregational giving. Limited report/discussion in Eric's absence. Mark and Eric need to sign Thrivent accounts (taking over from Gary Brown and Greta Larson). The finance report is approved.

Property - Grubby Sunday went well. One of the neighboring property owners asked to have access to his property through our parking lot for work on his property this summer which was approved by Pastor. Call Johnson Lock and Key for front door lock concerns. No current property updates or acute issues otherwise.

Worship and Music - Jumping into planning for the summer season. No recent committee meetings. Missy and Pastor continue service planning with their shared Google documents. No current updates or acute concerns otherwise. Judy D, Sharon S and Pastor taking Cajon class which is great.

Children, Youth & Family - No meetings recently. Confirmation wraps up on May 27th with a bowling party. Sunday school ended May 17th. Kingdom Kids last day was Wednesday May 6th. VBS planning underway (June 15-18th); Luther Point coming again this year. Encourage participation at Luther Bible Summer Camps as well.

Endowment - 3 requests: \$1000 for VBS programming requested by Pastor, \$500 approved from children's fund with request for additional details regarding use of funds for remainder of request, special meeting to be called to approve the remaining \$500 once further details provided; \$1200 requested for Luther Point Bible Camp participation (cost of registration, etc), requested by Pastor and approved; \$250 requested to Elsie's Barnyard to show support for their programming, donation approved.

The CYF fund is dwindling. CYF requests consideration on this matter for future endowment requests. Interest available to use within the CYF account is the least when compared to other accounts of a similar nature.

Pastor's Report - Pastor has been busy with their families new home purchase with move anticipated Memorial Day weekend. ELCA pastor gathering on Tuesday 5/19 here at ELC. Two pastors are leaving the area (Pastor Lucas Our Saviors is moving South after serving that congregation for 11 years, and subsequently his wife, who is the pastor from Hope Lutheran River Falls). May combine confirmation programming in the fall to help Our Saviors during this time of transition. Pastoral care for the summer for Our Saviors will be provided by both Pastor Pete and Svea/Eisvold Pastor Alex in a joint effort. Interim not to be assigned for Our Saviors until the fall at the earliest.

OLD BUSINESS:

Spring Grubby Sunday - successful. The carpet needs replacing in the Youth Room (old nursery).

New Church Directory - sign ups are going well; only 5 openings on 1st day remaining with approximately 20 openings on Wednesday (with about 37 sessions offered per day). Encourage sign up and further communications to occur with members who have not registered for a time in the near future.

Communications coordinator - seeking candidates. No interviews scheduled yet at this time.

Congregational meeting - Sunday, May 31st, 2026

Steps out front along main street

Rush River Concrete bid \$12,995.00 (Maiden Rock) includes railing - Council recommends

Thompson Concrete Services \$12,352.00 (Roberts) (doesn't include railing)

Parking lot bid -

Allied Blacktop Co. - \$11,890.00

Seal Central LLC \$14,880 (full reseal and striping); approximately \$11,904 with discount included (weekend work schedule concerns) Asphalt Maintenance and Paving (out of Spring Valley) - \$14,296 - Council going to recommend this bid from AMP bid given patching needed of current gravel fill sites and most comprehensive bid

Two bids combined: \$27,291

Council voted to present AMP and Rush River bids to the congregation at the special congregational meeting on Sunday, May 31st; for a total request of \$30,000 to cover the cost of these two bids and subsequent final payments for the work. Motions made and approved.

Thrivent accounts (\$25000 PPP; sitting for 5 years), fair stand (\$32685), property (\$9800) dedicated funds suggested as potential funds to be accessed for this maintenance

NEW BUSINESS:

Cleaning date for Fairstand - Sunday, July 19th, 2026 after Church

SWOT - themes for threats to be developed; meeting to be scheduled between Pastor, Mike, Danielle in near future; will consider more focused group SWOTs in future as well to continue to refine analysis

Kneel cushions along railing up front fraying; suggestion was made to potentially reupholster/repair

LORD'S PRAYER & ADJOURNMENT - Meeting closed with the Lord's Prayer. The meeting was adjourned at 7:16 PM. Next Scheduled Meeting, Tuesday, June 16th, 2026.



Hiring-Administrative Assistant (Part-Time, Flexible Hours/approximately 15 hours per week)

We are seeking a detail-oriented Administrative Assistant to support the daily operations of our church office. This part-time position offers flexible hours and plays a key role in keeping our communications, records, and ministry support running smoothly. The ideal candidate is organized, reliable, and comfortable managing a variety of administrative tasks.

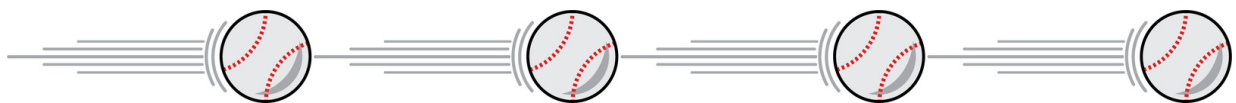
Responsibilities Include:

- Maintain the church website, Constant Contact communications, weekly bulletins, and monthly newsletters
- Perform general office duties, including data entry, ordering supplies, and filing
- Assist with project coordination and workflow organization
- Provide administrative support for baptisms, weddings, and funerals
- Maintain Church Windows, membership lists, and related databases
- Support committees with routine administrative needs
- Prepare the Annual Meeting Report
- Provide additional general office support as needed

Qualifications:

- Strong organizational and time-management skills
- Familiarity with Canva is a plus
- Efficient and accurate typing abilities
- Understanding of basic project coordination processes
- Excellent data entry skills with strong attention to detail
- Clear and effective communication skills for working with staff and the community

Please get in touch with the church and talk with Pastor Pete to learn more or to express your interest.



Hi, we have created a sign up genius if you have any members or students that would like to work at the ballpark this summer. This is a great way for students to get their service hours in for school. They can work concessions, scoreboard, cleanup or even help with maintenance if they need hours. Sign up or reach out to me. We are also registered with the Ellsworth School System to help get those hours in. Thanks, **Donna, Constant**, Ellsworth Church Softball League

<https://www.signupgenius.com/go/10C0E4CACAF28A2FFC16-64199492-oursaviors>

June 2026 English Lutheran Church Calendar

Church Calendar	Sun	Mon	Tue	Wed	Thu	Fri	Sat
	31	1	2	3	4	5	6
8am - Worship 10am - Congregational 10am - Fellowship Hour	1pm - Pool Players (Sr.) 7pm - Softball-ELC vs. Big	1pm - Game Day (Sr. Ctr.)			8am - Men's Breakfast 6pm - Recovery Support	1pm - Pool Players (Sr.)	
	7	8	9	10	11	12	13
8am - Worship 10am - Fellowship Hour 4pm - Softball-ELC vs. Zion	1pm - Pool Players (Sr.)	11am - Discovering Tuesdays 2pm - Picture Day 6:30pm - Finance Meeting	2pm - Picture Day		8am - Men's Breakfast 1pm - Euchre (Sr. Center) 6pm - Recovery Support	1pm - Pool Players (Sr.)	
	14	15	16	17	18	19	20
8am - Worship 10am - Fellowship Hour	12pm - VBS	12pm - VBS 6:30pm - Church Council 7pm - Softball-ELC vs. Bethel	12pm - VBS		8am - Men's Breakfast 10am - Sr. Ctr. Board Meeting 12pm - VBS 6pm - Recovery Support	Deadline for Newsletter 1pm - Pool Players (Sr.)	
	21	22	23	24	25	26	27
8am - Worship 10am - Fellowship Hour	1pm - Pool Players (Sr.) 7pm - Softball-ELC vs. St	8am - Foot Care (Sr. Ctr.)			8am - Men's Breakfast 1pm - Euchre (Sr. Center) 6pm - Recovery Support	1pm - Pool Players (Sr.)	
	28	29	30	1	2	3	4
8am - Worship 10am - Fellowship Hour 7pm - Softball-ELC vs. C3	1pm - Pool Players (Sr.)	1:30pm - Celebrating Seniors			8am - Men's Breakfast 6pm - Recovery Support	1pm - Pool Players (Sr.)	



See the church website for the most up-to-date calendar

PRAYER list



Prayer requests:

Janet Arndt
Max Beck
Tim Dahl
Matt Feuerhelm
Julie Gore
Dean Mewes
Judy Morrow

Darren Place
Sophia Sokolik
Elaine Wegerer

Military service prayers:

Josh Bechel
Jonathan Bergman
Kohl Flock



2026 Church Council

Members

President: Mark Groen
Vice President: Mike Harris
Treasurer: Eric Van Nocker
Secretary: Danielle Chollett
Cindy Baird
Miranda Mewes

Financial Update

April 30, 2026 Cash Balances
General Fund = \$76,665.28
Dedicated Fund = \$107,152.02
Total = \$183,817.30
Thrivent = \$118,406.58

General Fund
Income = \$15,085.81
Expenses = \$19,160.32

The next finance meeting:
June 9 at 6:30 p.m.

Deaconess

The role of the Deaconess consists of sending thoughts, well wishes, and congratulations to members of our church to let them know we are thinking of them. Please notify the church office or any deaconess worker with prayer requests.

The Deaconess for June is Kristi Lewis.



English Lutheran Church
229 West Main Street
Ellsworth, Wisconsin
Phone: 715-273-4617

Church Website:
www.englishlutheranchurch.org
Find us on Facebook!
EnglishLutheranEllsworth

Office Hours

Please contact the office for an appointment

office@englishlutheranchurch.org
715-273-4617

Staff

Pastor Pete Warren

pastorpete@englishlutheranchurch.org
Cell: 218-760-6974 Office: 715-273-4617

Communications Coordinator: **Hiring**

office@englishlutheranchurch.org
Office: 715-273-4617

Finance Administrator & Accompanist: **Ava Maxwell**

finance@englishlutheranchurch.org

Music Director: **Missy Kowalchyk**

music@englishlutheranchurch.org

Custodian: **Tami Place**